

## MINI CATENARY LIGHTS

Direct | Catenary



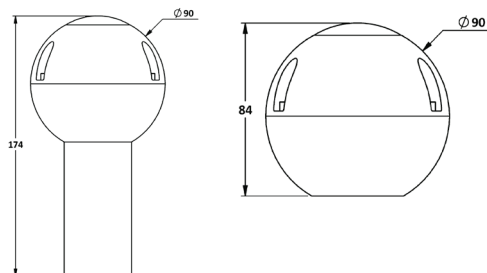
**MINI CATENARY LIGHT** luminaire features a compact, modern design crafted from durable aluminium die-cast housing with a high-quality powder-coated finish.

Powered by high-performance LEDs with a binning tolerance of  $\leq 3$  SDCM, this fixture ensures reliable and efficient illumination for outdoor environments. Designed for catenary suspension, it eliminates the need for poles, making it ideal for area and street lighting in plazas, walkways, and open public spaces. With an IP66-rated construction, it offers excellent protection against dust and moisture. Available in mono-colour, RGB, and mono with a decorative polycarbonate shade, it brings both functionality and character to any installation.

The fixture supports various beam angles (narrow, medium, wide) and comes equipped with hanging accessories for sturdy mounting. With a diameter of 90mm and a height of 174mm, customisations in finish and wattage are available upon request for enhanced integration.

### Single Line Diagram

Catenary Mounted



## MINI CATENARY LIGHTS



## Quick Info

### Mounting Type

Catenary

### Material Colour

Customize RAL available

### Protection mode

IP66

### Driver Details

Non-Dimmable/ Dali-Dimmable

Power Factor (PF) -0.95

THD- <10%

UGR - <19

### LED

CCT- 2700K/ 3000K/ 4000K

CRI-  $\geq 90$

Life Span - L70@50000h

MacAdam -  $\leq 3$  SDCM

### Beam Angle

Narrow

Medium

Wide

### Optics

Lens

### Efficacy

2700K- XXXXX

3000K- XXXXX

4000K- XXXXX

### Electrical

Wattage - 15W

Input Voltage- 24V DC

### Physical Dimensions

Height- 174mm

Dia- 90mm